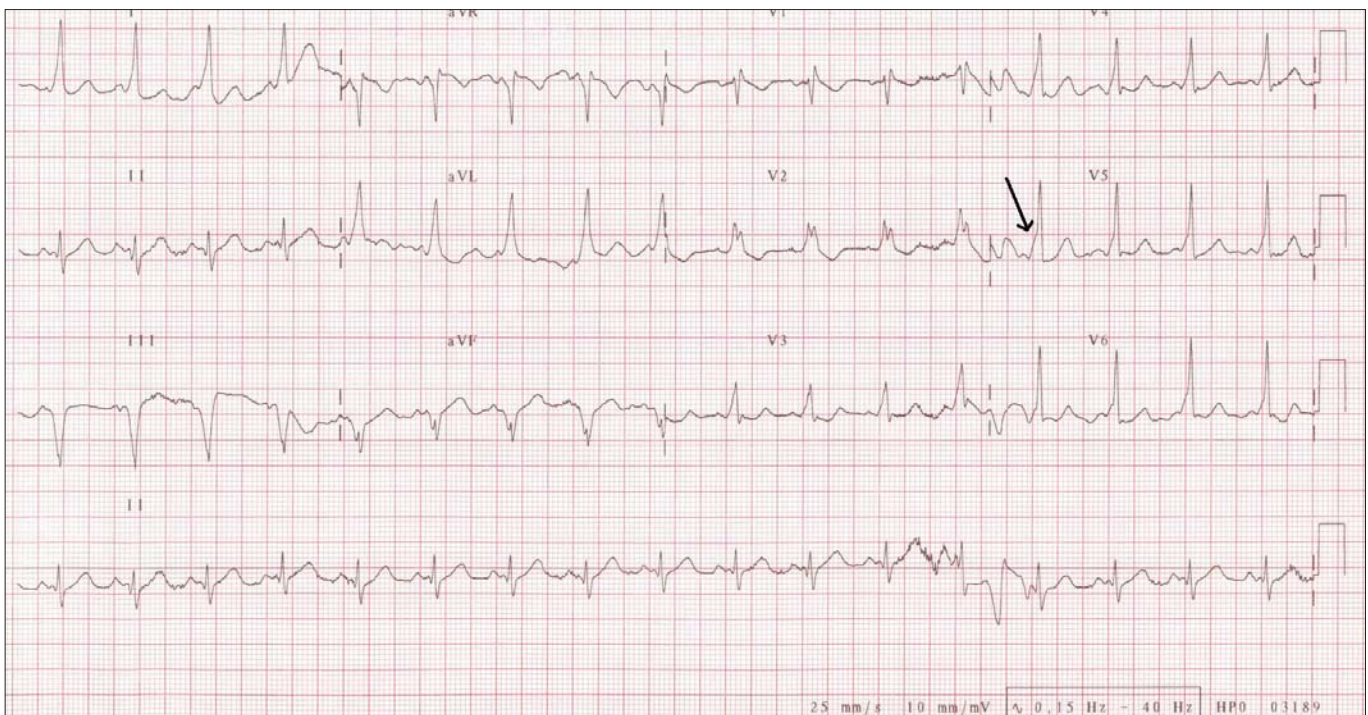


# ECG Challenge 2010

Welcome to the *RCS|smj* ECG Challenge!



Think you know the diagnosis? Try answering the questions and send your answers to [editorsmj@rcsi.ie](mailto:editorsmj@rcsi.ie). Please include your name(s), year and faculty with your attachment.

Keep up to date on our website – [www.rcsismj.com](http://www.rcsismj.com) – for the latest on the due date and prizes.  
**Good luck!**

## Questions

1. Describe the ECG (rate, rhythm, axis, intervals).
2. What is the diagnosis?
3. Describe the pathophysiology of this condition.
4. What is the significance of the wave indicated by the black arrow?
5. Discuss the classification of this syndrome.
6. What is the emergency treatment of arrhythmias within this condition?
7. What is the long-term treatment of this syndrome?

## Disclaimer

RCS|smj is the official student publication of the Royal College of Surgeons in Ireland. The opinions expressed in the journal are, however, those of the authors and cannot be construed as reflecting the College's views, or those of the editorial committee. The editor

reserves the right to edit all copy submitted to RCS|smj. Publication of an advertisement does not necessarily imply that the College, or the editorial committee, agrees with or supports the claims therein.

For guidelines for authors, please see: [www.RCS|smj.com](http://www.RCS|smj.com).